

INDIV USA CATALOG

Quality Equipment
and Supplies for the
Farming Industry



INDIV[®] **USA**
www.indivusa.com



INDIV[®]

Broad Expertise & Quality Products



Founded in 1964, INDIV has an outstanding image in the international market supplying customers in Latin America, South America, the Caribbean, Africa, Asia, Europe and in the USA.

We Are a Global Supplier With Local Service

INDIV is an international brand for poultry equipment and systems manufacturers, from production to process. From small farms to larger turn-key projects, INDIV has the quality products, support and experience to help your business.

Centrally Located

INDIV's headquarters is centrally located in Springfield, MO., with our USA warehouse located in Buffalo, MO, allowing us to ship products to our USA Customers in a timely manner.

58 years of experience

Our years of experience have allowed us to develop and manufacture our own products, as well as representing other reliable manufacturers of poultry and swine equipment.



Technical Assistance

Our Customers recognize the important role INDIV has as their main source for projects... not only due to our technical expertise and service, but because we have a passion for excellence and quality.

INDIV provides poultry solutions around the world ...and we are certain we can help with your next project!



Buffalo, MO Warehouse



INNOVATIVE FEEDERS

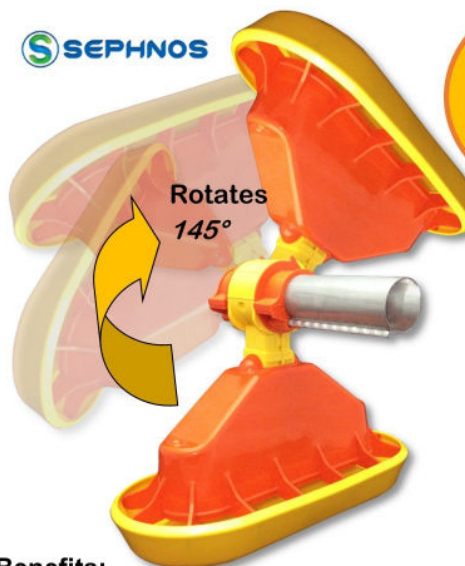
TURBOMATE®

Sixth generation patented baby chick feeder

Features:

- Made with 100% high-density virgin plastic and additives that provide a high resistance and durability
- This exclusive and innovative baby chick feeder is composed of a hopper, pan, hanger and clamp with a shutter
- Offers two positions: "ON" 90° position for feeding broilers or "OFF" 145° position for storage, washing and disinfecting work
- Flips into storage position on the right or left side, eliminating torque on the feeder line
- The clamp is easy to install around the metal feeder tube (smooth or ridged) and remains permanently fixed
- The recommended density is: 1 TURBOMATE / 75 to 100 chicks

SEPHNOS



Extends
11" from top
of tube
to bottom
of pan

For use with:



Benefits:

- Greater live weight from the first week to the end of the flock
- Easy access to the feed minimizes feed waste
- Better Feed Conversion
- Better uniformity
- Promotes intestinal integrity
- Mortality and cross infection are reduced
- Easy to clean and disinfect



Turbo Mate 2

Automatic bi-directional feeder for baby chicks from 1 to 18 days of age.

Features

- Made with 100% high-density virgin plastic and additives that provides a high resistance and durability.
- Bi-directional rotary system -170° and +170° allows to activate or suspend its use in a single movement: 0° = "ON Activated and +/-170° = "OFF" Not Activated.
- The clamp is easy to install around the metal feeder tube (smooth or ripe) and remains permanently fixed.
- Recommended density: 1 TURBOMATE 2® for every 50-100 chicks.
- To be installed with or without automatic feeders that have high height, considering the distance of the floor to the lower level of the tube from 23 cm to 26 cm.
- Capacity: 2.6 lb.
- Greater live weight from the first week to the end of the flock.
- Reduces mortality and cross infections.
- Improved Feed Conversion.
- Promotes intestinal integrity, avoiding litter intake.

SEPHNOS



Greater
weight gain



Improves
feed conversion



Increase
uniformity



Greater integrity
intestinal



Less feed
waste



Improves
labor time



Fast return
of investment



Easy to wash
and disinfect



Available
in long or
short length





CHICK FEEDERS

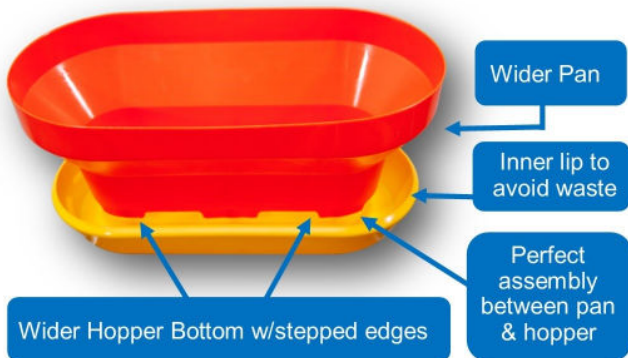
SEPHNOS

The Original
Patented
Chick Feeder!



Specifications:

- Manufactured with 100% virgin plastic and additives
- Capacity of 11 lbs (5 kg.)
- Recommended density of 1 TURBOGROW 2 for every 50 to 100 chicks
- Stackable design allows for quick and easy storage using minimal amount of space.
- 15" long x 6-1/4" wide x 7-1/2" high



TURBOGROW 2® Chick Feeder

Third generation feeder for the reception of the broiler during its first 15 days

Benefits:

- Rounded rectangular design allows more space between automatic feeders for chicks to migrate easily between feeder and drinker lines
- Special design of large inner lip keeps feed in the pan, not on the litter
- Greater weight gain during the first week of age
- Greater weight at the end of the flock
- Uniformity enhancements between 10% to 15%
- Mortality and cross infection are reduced
- Greater number of flocks per year
- Quick return on investment

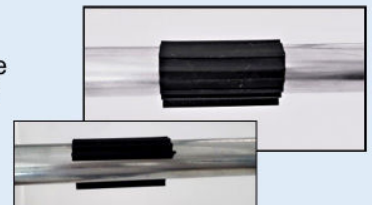
Max Fill Feeder

Placed in between automatic feeders to control the output of feed, the Max Fill supplies a larger amount of feed to the chick feeders to insure that feed is always available.



TT Filler

A feed dispenser that controls the output of feed during the filling of the feeders. The new improved TT-Filler design allows for easier twisting to close off feed.



TURBOGROW 2 PLUS® 6th Generation Feeder!



- For Broilers, laying hens, breeding hens, and barnyard fowl during the 1st 15 days
- New assembly system for better fit between hopper and pan
- To be placed between automatic feeders
- Greater weight gain during the first week and at the end of the flock
- Better uniformity
- Better feed conversion
- Reduced mortality
- Thanks to its design, it can be stowed quickly and easily, occupying a minimum amount of space



SEPHNOS

CHICK FEEDERS



Sephnos Turbo mix

Innovative automatic feeder; open type with elongated form, telescopic action and a hopper with feed distribution windows at the bottom. Bi-directional turn so its above the head of the birds. Designed for baby chicks, pullets and poults.

SEPHNOS



- Supplementary feeder for baby chicks during the first 18-21 days of age
- Produced with 100% Virgin Plastic and additives that provide high resistance and durability.
- Pan & Hopper with rectangular, rounded design
- The hopper has windows for optimal feed distribution in the lower part. In its upper central part, there are holes on each side to set the hanging base.
- The pan has a central cone that allows for 360° feed distribution and a pronounced inner lip on its upper edge to avoid feed waste.
- Clamp with a sliding pin system at the top to place the feeder in a position of "off" at the head of the birds, and a tongue in the form of a "T" at the bottom to control feed outlet.
- Leaves adequate bird space between feed pans, even with 4 on 9 application
- Recommended density: 80-100 birds
- Capacity per feeder: 2.65 lbs (1.2 kg)



Greater weight gain



Improves feed conversion



Increase uniformity



Greater integrity intestinal



Less feed waste



Improves labor time



Fast return of investment



Easy to wash and disinfect



Turbogrow 1

Chick Feeder for Broilers in the first 14 days

For use on the floor or in cages.



Turbogrow 3

For Broilers in the first 15 days

- Greater weight gain in the 1st week & at the end of the flock
- Improved feed conversion
- Greater number of flocks per year



Turbogrow Shallow®

Third generation baby chick feeder for the first 14 days

- Greater live weight at the end of flock & improved uniformity
- Better feed conversion & avoids feed waste
- Reduced mortality



POULTRY FEEDERS

MaxClassic

Classic Poultry Feeder

FEATURES:

- The MaxClassic feed pan has a traditional design with a 13" diameter, available in either a 10 Spoke grill or 14 spoke grill
- Rim-to-floor pan height allows the chick easy access to feed
- During the brooding phase, the pan rests on the floor putting the feeder into flood position, allowing the chicks to easily eat, without wasting or spilling feed onto the litter
- Feed windows: when the pan rests on the ground, its 3 windows open automatically and fill the pan
- With quality being our goal, the design of the MaxClassic is manufactured in the USA from high quality plastics that provide durability for years of trouble-free use
- 5 Year Warranty

Traditional design
with proven results.
Easy to manage
from start to finish.



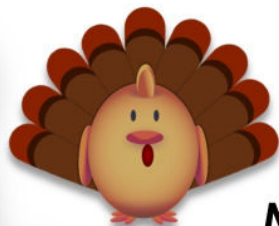
MC-14: 14 Spoke Grill

MC-10: 10 Spoke Grill



- The pan has different feed level settings. Choose your desired feed level with just a simple twist of the feed level selector
- The pans are easy to install and remove for cleaning. Grill may be attached to the pan by using zip ties for cleaning
- Capacity: 65 birds per pan (quantity is dependent on climate and bird size)

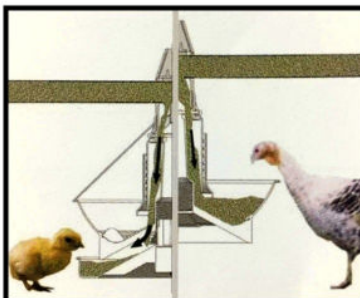
TURKEY & HANGING FEEDERS



POLYFEEDER An Innovative Multi-Stage Turkey Feeder

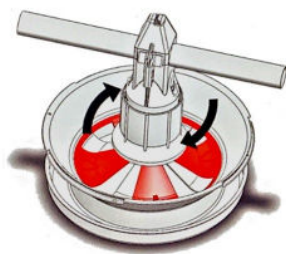
High quality, versatile turkey feeder that can be used in all-in and all-out buildings with the same feeder, and can be configured for either brooding or finishing!

Manufactured in Italy
& distributed in
partnership with Giordano
Poultry Plast



Benefits

- For turkey poults, and chicks use the lower part of the feeder
- During the finishing stage, adult birds use the top part of the feeder
- Feed flux can be precisely adjusted at all stages of feeding
- After 6-8 weeks, the bottom pan used for weaning can be removed for the grow-out cycle, which helps maintain a better hygienic environment



Patent pending open/close valve is the heart of the feeder and can be used in either brooding or finishing.



- Greater weight gain of birds
- Mortality and cross infection reduced
- Improved feed conversion
- One feeder for every 50-100 birds
- Greater number of flocks per year
- 26 Lb. capacity
- Available in green for turkeys or orange for broilers

Manual Hanging Turkey Feeder

- Manufactured of galvanized metal
- 50 lb capacity
- Made in the USA



Manola B Manual Hanging Poultry Feeder

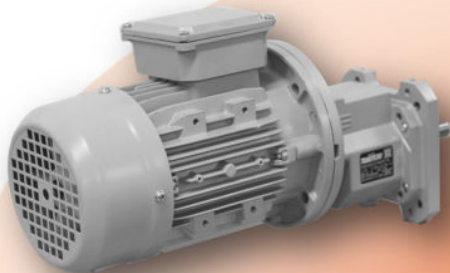
- 45 lb capacity



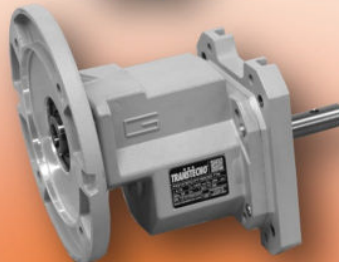


FEED LINE COMPONENTS

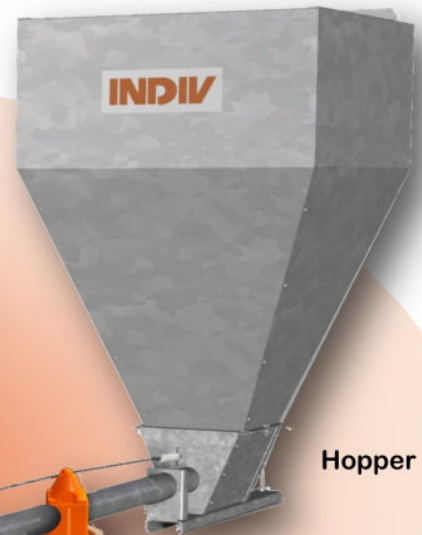
We customize
feed lines
to fit your needs!



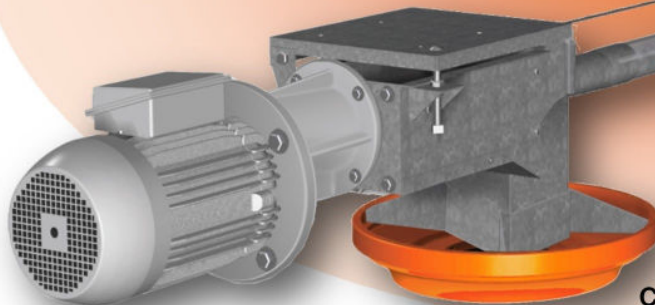
Gear Drive
with Motor



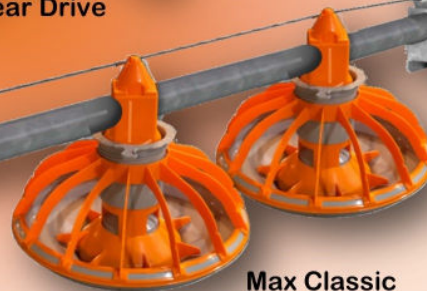
Gear Drive



Hopper



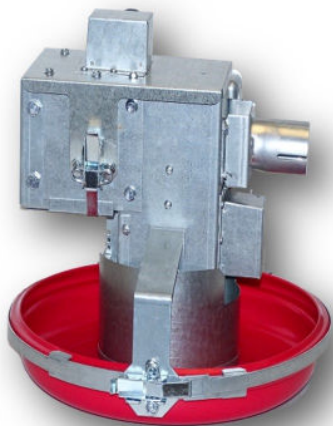
Control Pan



Max Classic
Feeders



Auger



Direct Drive Control Unit

Shown without motor.
Motor sold separately.

LED Control Pan Feed Light

Designed to
generate light at
poultry-specific
wavelengths that
attract the birds
and encourage
feeding. It doesn't
get hot, creating a
safe environment
for birds. Can be
attached to a
variety of pan
sizes.



Plastic Hopper

100 liter capacity



* Feed Line Components vary by region. Call 417-862-2673 or email: usasales@indiv.com for more info.

POULTRY DRINKERS



IGNITION I® Drinkers

Features:

- Made with 100% high-density virgin plastic and additives that provide a high resistance and durability.
- Recommended density of one IGNITION I® for every 50-100 chickens
- Available in 2 sizes: 1 gallon and 1/2 gallon

Plastic wide mouth floor drinker that provides easy access for broilers, laying hens, pullets, turkeys and backyard birds.



Innovative manual drinker for floor or hanging, for use with chicks, pullets and backyard birds.



IGNITION V® Drinkers

Features:

- Made with 100% high-density virgin plastic and additives that provide a high resistance and durability.
- Recommended density: One IGNITION V® for every 75-100 birds
- Capacity: 1.40 gallons
- Quick hydration and easy access for birds from day one



Gravity Drinker

- Works suspended or on the floor
- Ballasted
- Usable through all stages of growth
- Low profile



Jumbo B Drinker

- Works suspended or on the floor
- Ballasted
- Usable from 1 day old to adult
- Top quality durability
- Interchangeable



G 86 Drinker

- Works suspended only
- Top quality durability





Egg Incubators



Surehatch SH60 **Fully Automatic** **Digital SH60** **MiniHatch**

- Our smallest fully automatic digital egg incubator and hatcher.
- Setting Capacity: 60 eggs
- Hatching Capacity: 40 to 60 Eggs
- Produce 40 chicks per batch or up to 20 per week



SureHatch SH180 **Table Top Incubator**

- Popular table top incubator ideal for small hatching.
- Setting Capacity: 180 eggs
- Hatching Capacity: 160 eggs
- Produce 180 chicks per batch or up to 40 per week



SureHatch SH370

Cabinet style egg incubator **with front access**

- A combination egg incubator and hatcher
- Incubation capacity: 270 eggs



SureHatch SH560

Automatic Digital Egg Incubator and Hatcher **for 560 eggs**

- medium-sized egg incubator
- Setting Capacity: 360 eggs / Quail Eggs: 520
- Hatching Capacity: 200 / Quail Eggs: 520
- The Surehatch SH560 can hatch up to 594 chickens per month.



SureHatch SH680

Automatic Digital Egg Incubator and **Hatcher for 680 eggs**

- Excellent medium-sized egg incubator widely used by hobbyists, poultry breeders, farmers and entrepreneurs
- Incubator Capacity: Chicken/Guinea Fowl Eggs: 480
- Hatching Capacity: Chicken/Guinea Fowl Eggs: 200

Sure View Egg Candler

Instantly test eggs for fertility **after 10 days in the incubator!**

By candling eggs with the SureView Egg Tester you can check if embryos are developing correctly. This saves a lot of time and money as you know which eggs stand the best chances of hatching. Everyone who owns an incubator needs a egg fertility tester!



Combo Egg Incubators



**SH1000 Automatic Digital
Egg Incubator and Hatcher**
for 1000 eggs



Model SH2000 Combo SuperHatch®
Fully Automatic Digital 2000 Egg Incubator and
Hatcher Combo



SH4000 Chick Hatchery
4000 Egg Hatchery - Produce 720 chicks per week



**SH6000
Chick
Hatchery**

6000 Egg
Hatchery -
Produce
1440 chicks
per week



SH8000 Chick Hatchery
8000 Egg Hatchery - Produce 2160 chicks
per week



1SH12000 Chick Hatchery
2000 Egg Hatchery - Produce 2880 chicks per week



MANUAL NESTS & PADS



Available
with 4, 6 or 10
holes



Our nests are manufactured here in the USA and promote poultry health and greater egg production.

Features:

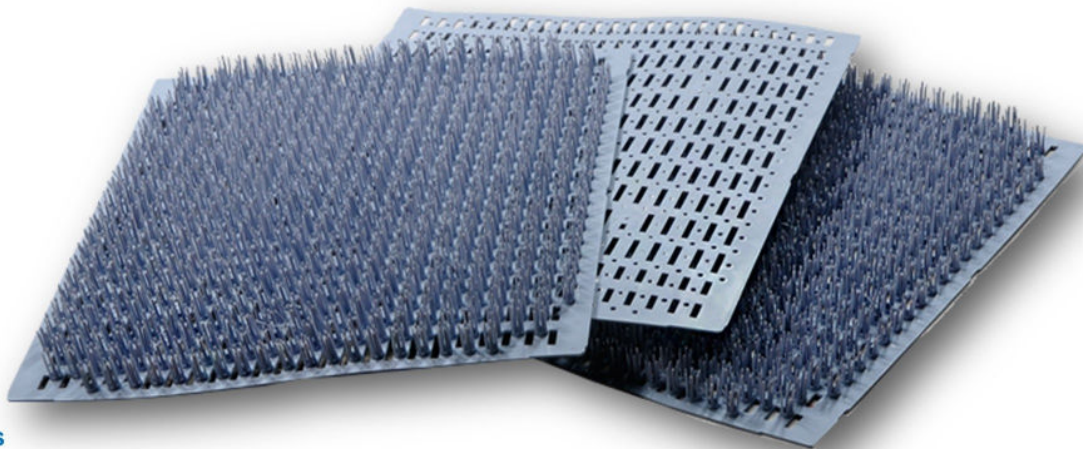
- Ventilation holes in partitions for fresh air flow.
- Sloped anti-roost roof
- With galvanized nest bottoms
- With perch boards and necessary hardware
- With aluminum rivets for easy assembly (comes assembled)
- Manufactured in the USA
- Available in 4, 6, and 10 hole nests



Nest Pads

DURA-PAD
POULTRY NEST PAD

- Easy to clean
- Safer egg roll-off
- Increased comfort for hen
- Longer life
- Better filtration
- Rot & Corrosion proof
- High grade polypropylene
- Superior wear resistance
- Fewer feathers stick to eggs



ROLL-AWAY LAYING NESTS



VAN GENT Roll-Away Laying Nests Lowest Percentage of Floor eggs !



**The last generation in automatic community nests for
breeding hens, broiler breeders and laying free-range system**

- Built with first class wooden plates, plywood on both sides, ensuring its easy cleaning and long useful life
- Modular design, simple and stable construction make assembly quick and easy
- A mechanical timer activates the eject system. The expulsion system makes the hens leave their nests and closes at the end of the day, avoiding dirty nests and broody hens. The result: Clean eggs are obtained
- The eggs roll out of the artificial turf carpet to the conveyor belt. The way the eggs move has been carefully designed to prevent breakage
- The nest offers two separate conveyor belts, 25cm wide each, this makes the egg roll less, limiting to a minimum the possibility of broken eggs. The tapes are made of polypropylene (PP), fabric or perforated

Smart Manual Nest



**Patented
Design**

Features:

- Maximum production of high quality hatching eggs
- No need for bedding material, which can bring infection
- The eggs are collected from the central egg belt, resulting in quick cooling of the eggs which reduces contamination
- The perforated eggbelt keeps the eggs apart to prevent cracking and breaking
- The gentle sloping nest bottom ensures the eggs roll away quickly to the belt, so the eggs can cool down fast and remain cleaner
- The nest is made from Turfmat (an open mat) which means all dirt and manure particles can fall through, resulting in cleaner eggs



POULTRY HOUSE FLOORING

A New Generation in Poultry House Flooring

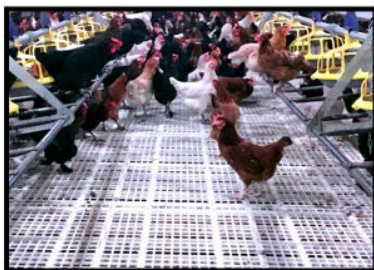
Sani-Slat™



An easy to clean,
HYGIENIC slat,
for **CAGE FREE** layer &
heavy **BREEDER** operations.
Designed by Professionals
with Years of
Industry Experience !

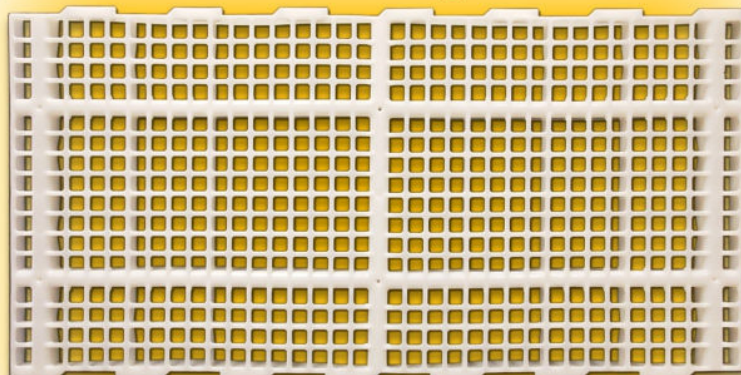
Features

- Prevents litter buildup on supports for a more sanitary environment
- Specially designed surface allows for easy manure passage to protect bird's feet
- Corrosion and bacteria resistant for healthier birds
- Easy to install and clean (installs on wood or rail)
- The heavy-duty design is rated for up to *250 lbs of static weight per 1/4 section, in fully attached/fastened state, with both ends and center support
- Size: 2' wide x 4' long
- weight: 6.68 lbs
- * Does not include running or jumping on slats, or improper use, which would void any warranty or guarantee



Sani-Slat
stays clean
longer. Photo
taken after 2
months use.

Standard 4' long Sani-Slat

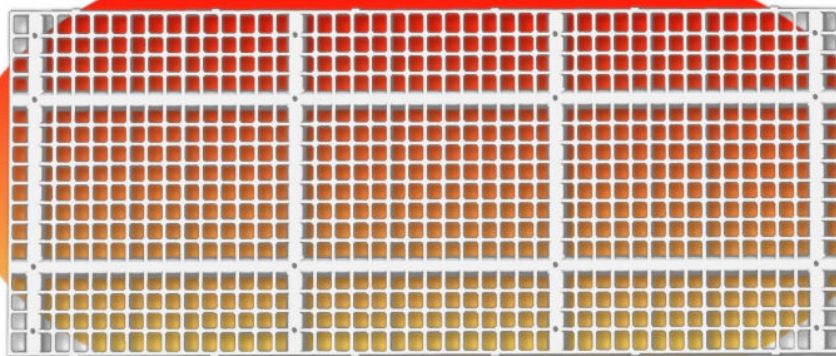


- Available in white and black



For applications requiring additional weight capacity or for metal frames, we suggest using the **Super Heavy Duty Sani-Slat**. Available in Tan color only.

Larger 5' Sani-Slat XL



Stays Clean Longer!

Hygienic

- Prevents litter build up

Strong

- High quality, Durable Plastic

Easy Installation

Check out our
installation video @
www.sanislat.com

Manufactured in the
USA with high quality,
100% virgin plastic
materials



SANI-SLAT XL!

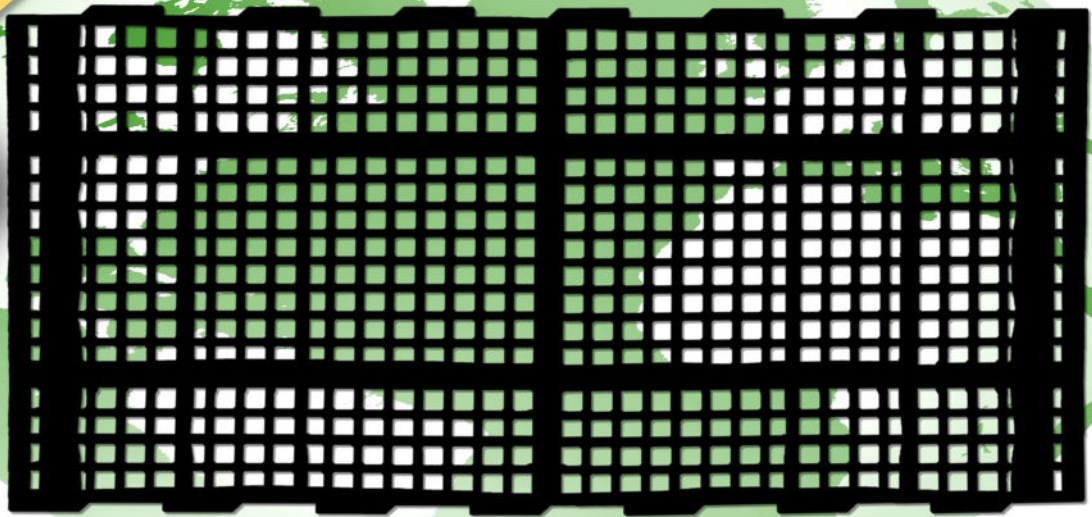
- The new larger size is 12" longer than the standard Sani-Slat!
- XL size: 2' wide x 5' long
- Requires less frames per house which lowers installation costs
- New design allows better stacking, reducing shipping costs
- Same hygienic features as the standard slat, designed to stay clean longer.

ECO-FRIENDLY SLAT



Our **Eco-friendly** slat
made using **Sustainable**
manufacturing practices with
50% quality
Reprocessed Plastic

ECV-50 SLAT



Features:

- **Eco-Friendly** - Using sustainable manufacturing practices with 50% certified quality reprocessed plastic along with 50% virgin plastic.
- **Clean Birds and Eggs**- Manure does not build up on the slat providing a cleaner environment, keeping both birds and eggs clean.
- **Value**- The ECV- 50 a blend of both virgin and reprocessed plastics offers a good value while offering a quality long lasting slat.
- 1" square hole openings with a specially designed non-porous surface allows for easy manure passage which assists with the prevention of manure build-up and bacteria. This provides a more sanitary environment for the bird and slat eggs when compared with wooden slats.
- **Installation**- Faster installation with fewer screws required than other slats, and may be installed with only 3 wood runners on wood frame. This slat is also suitable for use with steel rail support systems.

Size- 24" tall x 48" wide
Weight 6.68lbs
Color- Black



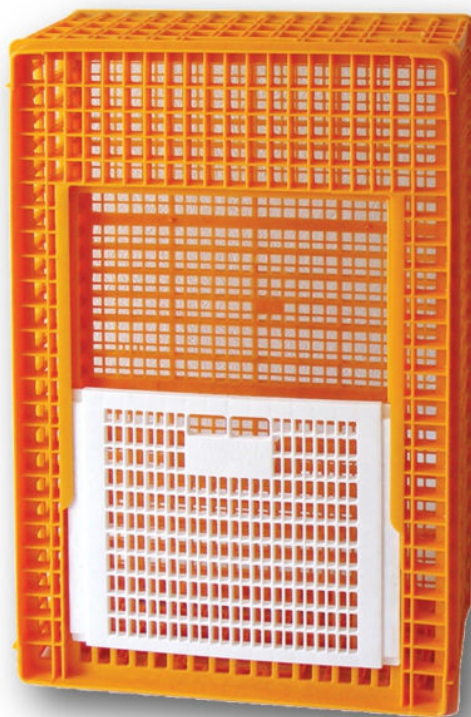
Eco-Friendly

Clean

Value



Transportation / Coops



Piedmont Coop

- Smooth and round surfaces minimize bruises and broken wings, preventing injuries during the coop handling
- The spring latch keeps birds safely locked in the coop
- The special design guarantees maximum ventilation, quicker and easier cleaning
- Perfect interlocking reduces danger of load shifting
- UV stabilizer reduces ageing due to solar rays
- Very simple to assemble: push fit-self locking
- No equipment needed. A simple pressure assures the complete assembly of the coops

Dimensions

38.19" x 22.83" x 10.63"

Weight

17.20 lbs

Sliding top door size

16.53" x 15"

Standard color

yellow with white doors

Capacity

18/20 birds, dependent on climate & weight

Mini Piedmont Coop

- Smooth and round surfaces minimize bruises and broken wings, preventing injuries during the coop handling
- The spring latch keeps birds safely locked in the coop
- The special design guarantees maximum ventilation, quicker and easier cleaning;
- Perfect interlocking reduces danger of load shifting
- UV stabilizer reduces ageing due to solar rays
- Very simple to assemble: push fit-self locking
- No equipment needed. A simple pressure assures the complete assembly of the coops
- Economical and safe
- HD polyethylene UV stabilized

Dimensions

30.32" x 22.44" x 11.42"

Sliding top door size

16.54" x 12.60"

Weight

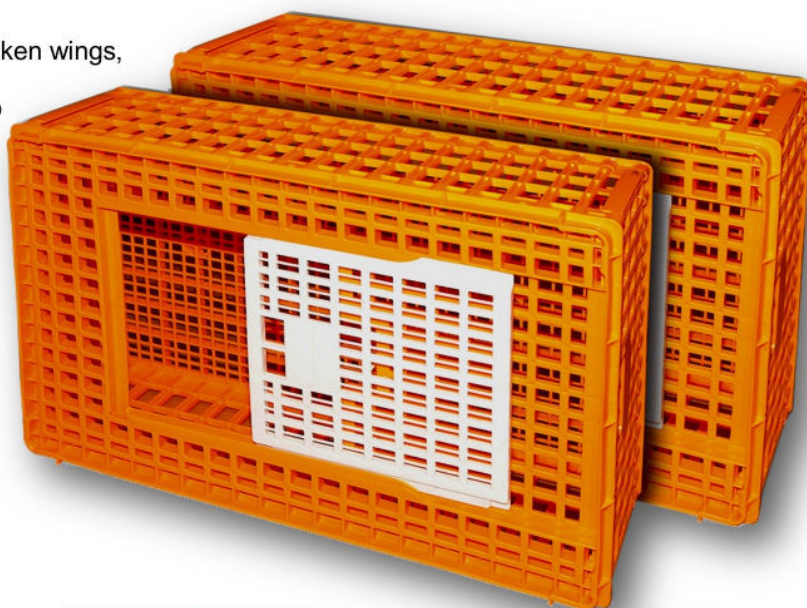
14.89 lbs

Standard color

yellow with white doors

Capacity

14/16 birds, dependent on climate and weight



Our cooperation with Giordano Poultry Plast began 20 years ago. Thanks to a joint venture, they started producing Piedmont and Mini-Piedmont coops in collaboration with INDIV. Thanks to this technical and commercial collaboration, GPP is present throughout the American continent, with a very good network of distributors and direct customers.

PIEDMONT TITAN COOP



The **Piedmont TITAN coop** is **STRONGER**, more **DURABLE** and easy to use... it is **BUILT TO LAST!**

Coming Soon!

Piedmont Titan Coop

- Smooth and round surfaces minimizes bruises and broken wings, preventing injuries during coop handling
- The spring latch keeps birds safely locked in the coop
- The design guarantees maximum ventilation with quicker and easier cleaning
- Interlocking surfaces eliminate shifting loads during shipping.
- UV stabilizer reduces aging caused by exposure to sunlight
- Finger holds in four places for easy handling
- Door opens inward and lays flat on top surface
- No assembly required

Dimensions

35" x 24" x 10"

Top door size:

15" x 15.5"

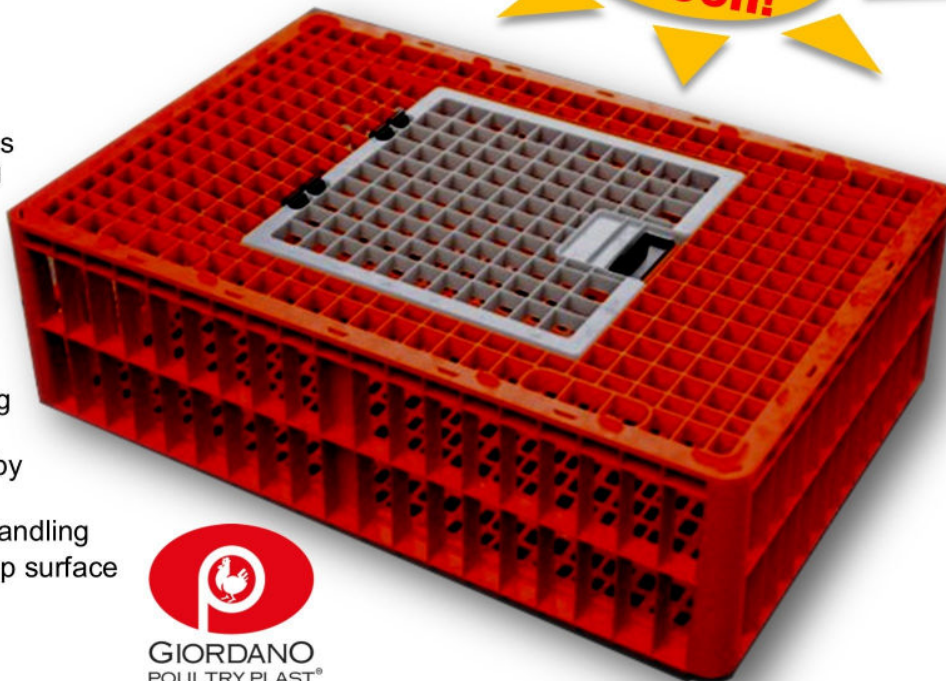
Standard color

Red body w/black top door

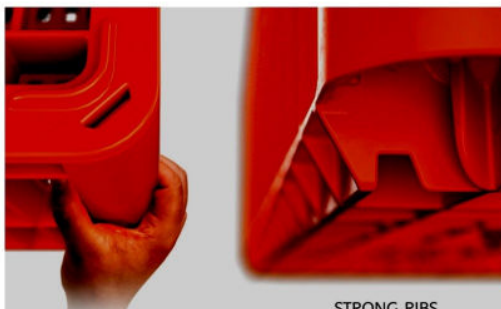
- Custom colors available (with a minimum order requirement)

Capacity

14/16 birds (dependent on climate and weight)



GIORDANO
POULTRY PLAST®
purely professional.



STRONG RIBS



**MADE
in the
USA**



Coops & Chick Boxes



11" Model

Because the Poly Koops are stackable, these live chicken transportation coops can reduce shipping costs by up to 50% !

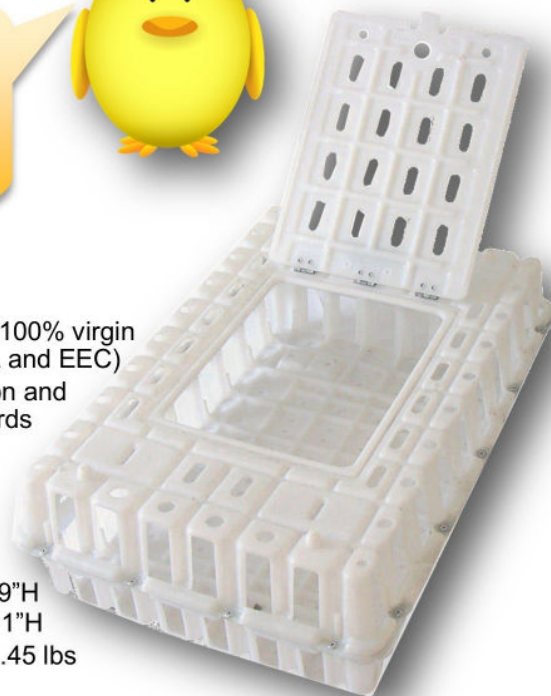


Poly Koop

- Made of high density polyethylene, 100% virgin + UV additive (compliant with FDA and EEC)
- Design allows better ventilation and more protection for your birds

Specifications:

- 9 " size : 35"L x 23.50"W x 9"H
- 11" size: 35"L x 23.50"W x 11"H
- Weight: 9" -12.60 lbs / 11" - 14.45 lbs
- *Holds 10-12 chickens

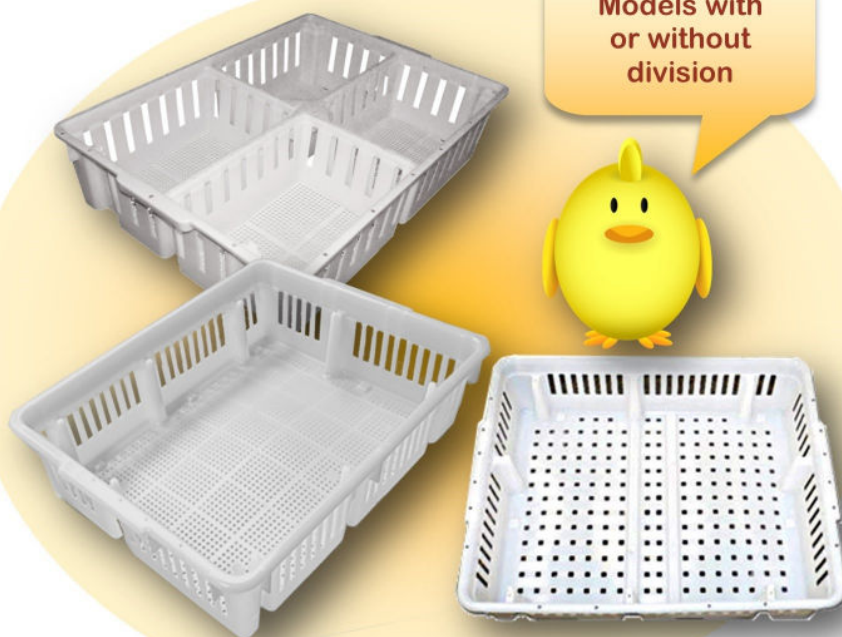


9" Model

* Bird capacity may fluctuate depending on weight and climate

Chick Boxes

- Strong, high density polyethylene used in the manufacturing of our paperless non-divided chick boxes, provides rigid, impact resistant walls.
- Design prevents side walls from warping in hot weather, which prevents baby chicks from escaping
- Provides ample ventilation, helping to reduce mortality rates
- Weighs only 3 pounds, with molded handles for easier transport
- Boxes nest inside each other to save storage space
- Does not absorb moisture, dirt, chick litter and odors, which makes for easy clean up
- Resistant to damage if dropped or stepped on, and will last for years with practically no maintenance.



Models with or without division

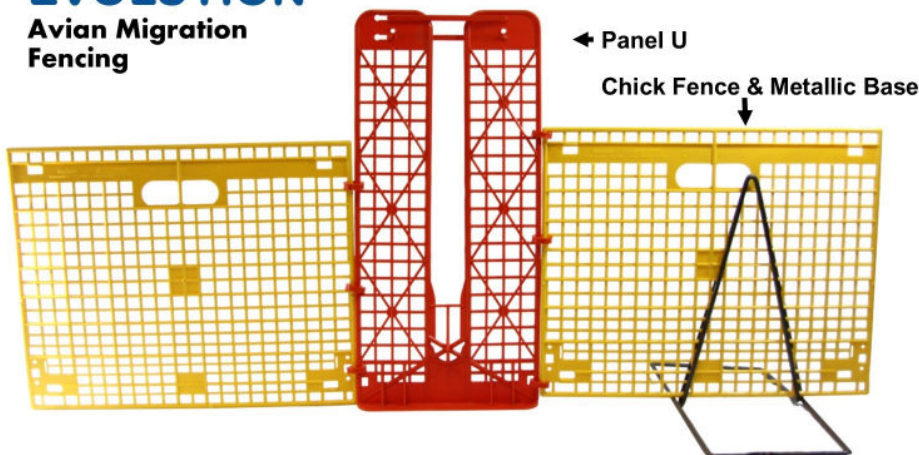


FENCING & NETTING



EVOLUTION

Avian Migration Fencing



The Chick Fence is composed of a U-panel and a rectangular panel, and is made of strong and resistant squared plastic panels. The joint with straps are held by a strong metallic base that forms this uniquely designed Avian migration fence.

Benefits:

- Avoids avian migration
- Reduction of heat stress
- Enhances feed intake
- Improve feed conversion
- Birds waste less energy
- Mortality reduction



- 100% virgin plastic & Additives
- Fence composed of the U-Panel, Chick Fence & Metal base
- Air Spaces 80%
- Quick and easy storage with minimal space
- Customizable for your specific sizes and needs



Hex Netting—The Perfect Netting for Poultry Houses, Nests, & Cages



Features

- **HEAVY DUTY** galvanized hex wire
- 5 mil PVC coating for extended life
- Durable and rust-proof
- Ideal for poultry or livestock
- Manufactured of high quality 19 gauge tensile steel wire mesh
- PVC coating does not become brittle, even after years of sun exposure

Specifications

Mesh size: 1" hex opening

- Sizes available:
1'- 4'- 5'- 6' wide x 150' rolls
(3' & 7' by Special Order)





CLIMATE CONTROL

EVAPORATIVE COOL PADS

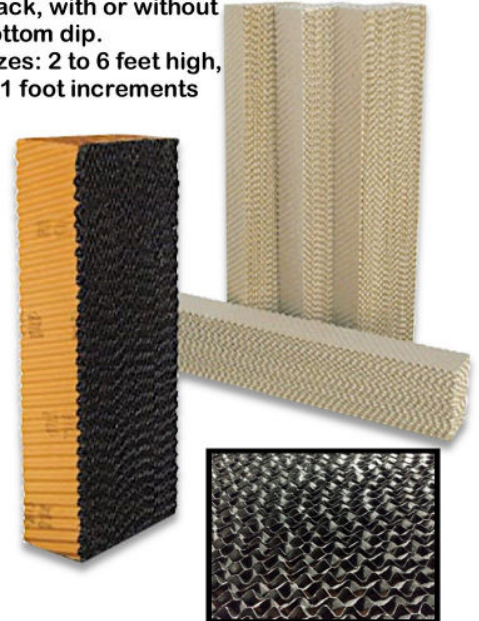
provide humidification and cooling creating a **great relief for animal stress** that is produced by heat inside the houses.



The evaporative cooling system is a process that reduces air flow temperature by water evaporation. Maximum efficiency is achieved by directing the air to be cooled through wet pads placed at the inlets of the air ventilation system. As the air passes through the pads, it absorbs water, which provides a higher capacity for heat removal.

Evaporative Cooling Pads

Available in regular or black, with or without bottom dip.
Sizes: 2 to 6 feet high, in 1 foot increments



Vent Doors



Inlets



hoods



Minimum vent inlet

CURTAINS

We can design custom curtain installations for you. Our curtains come with a small sized hem that can accommodate conduit up to .922" OD. For the best installation, we recommend our swaged curtain conduit. Curtains are available as drop down or roll up. Medium, large and keder hems are also available. Weights & colors available:

Woven Polyethylene: 4.3oz Polylite Clear, 7.5oz Titan Clear, 5.6oz Black/White Premium,

Vinyl: 10oz Vinyl in White, Black/White, Frosty Clear, 16oz Water Clear

if you need multiple hems, different sized curtains, or if you would like your curtain to drop from the top or roll up from the bottom. Insulated curtains are also available by special order.



POWER CURTAIN DROP

When used in combination with a curtain and winch, PowerDrop provides backup natural ventilation for livestock in the event of a sustained power failure. PowerDrop runs without batteries, timers or mechanical devices and instead relies on an electromagnetic lock. PowerDrop holds for a delay period after power failure. If power is not restored before the delay expires, the PowerDrop arm is forced open releasing the curtain winch.



CLIMATE CONTROL



Tube Fans

These robust fans are used for various agricultural applications like greenhouses, pork, calf barns and chicken houses and industrial applications like factories and buildings. These fans are engineered for continuous operation in highly corrosive environments and are suitable for outdoor use. Great for positive pressure tube ventilation systems too!

- Materials resistant to extreme environments like livestock barns.
- OSHA compliant intake grill.
- Extremely durable fan with 3-year warranty.
- Easy installation and maintenance
- Stainless steel fasteners, Polypropylene / glass fiber impellers
- High performance and energy efficient with a water and dust resistant fan motor (IP55) and Class 'F' insulation
- Suitable for ambient temperatures up to 104 °F (Optional model for higher ambient temperatures available by request)
- Low noise level
- Available in 10" - 24", 120V or 240V / 22", 28" & 36" available 240V only

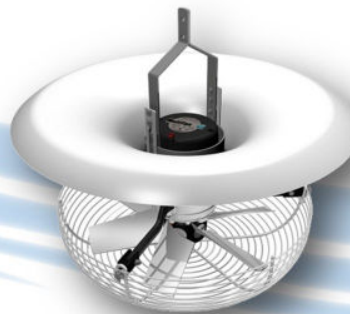


INDIV Basket Fan



- Poultry Fans Wide Spaced Guards
- High efficiency, quiet operating
- Wide spaced guards resist clogging
- Industrial grade aluminum blades
- Prewired with 10ft grounded cord—115v
- Motors are TEAO
- *Non-OSHA guarded fans must be mounted over 7ft. above ground.

V-Flow Fan



- Results in a uniform climate
- Controls the humidity level
- Reduces the energy costs through vertical airflow
- IP55 motor (water and dust resistant)
- Low noise (47 dB at 23 feet)



G-12 Infrared Heater

- Excellent heat source
- High Capacity 12kW (BTU 42.000)
- Stainless steel construction
- Operates on a low gas pressure
- No moving parts => low noise level
- Fuel savings
- Unique reflector design
- Durability & Low maintenance

Meters

- Kestrel Weather meters
- Hygrometers
- Light Meters
- Thermometers
- Thermostats
- Tachometers





WINCHES & PULLEYS

Overhead Winch 5500

This reliable and easy to maintain winch is perfect for feed lines. It is widely used on lines less than 500 ft long. The welded frame gives this winch a capacity of 3000 lbs and features a grease fitting on the hub to keep it running trouble free year after year.

Hub: 3.46
Gear Ratio: 38:1
Drum Capacity 1/8" - 208 ft
Drum Capacity 3/16" - 94 ft
Weight: 39 lbs



Worm Gear Winch 5585

Ture Machined worm gears with unprecedented reliability. Beesley uses precise machined angles on the worm and drive gears to eliminate binding. This, along with sealed bearings, delivers the smoothest worm gear winch available... perfect for drinker lines and can also be used on heater suspension

Hub: 1.67
Gear Ratio: 41:1
Drum Capacity: 1/8" - 57 ft
Weight: 23 lbs (2 per box)



Hand Winch 5555

This winch has a rating of 1200 pounds with an embossed framed and powder coated finish to resist the elements. This winch is used for winching tunnel doors, vent doors and curtains.

Hub: 1.30
Gear Ratio: 3.87:1
Rated Capacity: 1200 lbs
Unit: 10/box
Weight: 59 lbs



3-1/2" Cast Iron Pulley 2040

Galvanized straps with bushing and cast iron sheave, commonly used at the winch on feeder systems.

Rated Capacity: 1500 lbs
Unit: 25/box
Weight: 33 lbs
Diameter: 3 1/2"



1-7/8" Swivel Pulley 2030

The galvanized coating increases its tolerance to the harsh chemicals utilized in most farms today. This coating offers three times the protection of zinc plating. The 1 7/8" swivel pulley is perfect for feed lines but is not recommended for nests or heating.

Rated Capacity: 220 lbs
Unit: 300/box
Weight: 46 lbs
Diameter: 1 7/8"



7/8" Curtain Pulley 2020

It can now be found in any poultry house, but Hank Beesley's idea got its start in the industry in 1965. Hank's inspiration came from a set of Venetian blinds that he was repairing and he immediately saw an application for it in poultry houses, contacted the manufacturer and ordered 10,000 pcs...the curtain pulley was born. Use the curtain pulley on drinker lines, curtains, and vent doors.

Rated Capacity: 130 lbs
Unit: 1000/box
Weight: 45 lbs
Diameter: 7/8"





PERSONAL PROTECTION EQUIPMENT



MICROPOROUS BREATHEABLE COVERALL

Breathable for Comfort!

- White BB Coveralls
- 60g Microporous Polypropylene
- Zips up the front for easy on/off
- Elastic Wrists & Ankle Cuffs
- 100% Latex Free!

TYVEK® COVERALLS

Zip-front Disposable Coveralls

- Excellent Splash Protection against many liquids
- Comfortable, economical and flexible



35 MIL PVC APRON

- Yellow Vinyl Reinforced Polyester Apron
- 35" x 50"

DOT GRIP GLOVES

- Great ventilation.
- Keep hands cool
- Hand-to-hand reversible.
- One size fits most.
- Cotton knit w/ vinyl dots for a sure grip.
- 12 pairs per box



BOOT COVERS ELASTIC CUFF 5 MIL

- One Size fits M, L, XL
- 16" High
- Elastic Top
- Heavy Duty 5 mil polyethylene resists light chemicals
- box/50 (25pair)

Also Available in 2XL



BOOT COVERS / PERFORATED TIE

- One Size fits M, L, XL
- 16" High
- Tie Top
- Heavy Duty 5 mil polyethylene resists light chemicals
- box/50 (25pair)



N95 DISPOSABLE RESPIRATOR MASKS

- White Respirator
- Adjustable metal band
- NIOSH N95 Rated
- Polyester/Polypropylene
- 3 ply material
- One size fits all

FLAT FOLD N95 RESPIRATOR MASK

- White Respirator
- Adjustable Metal Nose Band
- Meets NIOSH Standard For N95
- One Size Fits All
- Foldable, 3D Contour Design Creates Less Fog When Wearing Glasses



PLEATED EAR LOOP PROCEDURAL MASK

- Blue Procedural mask
- Adjustable nose band
- Latex free ear loops
- Polyester/Polypropylene
- 3 ply material
- One size fits all
- 50 per box



Available in Youth size

INDIV[®] USA

INDIV USA Headquarters

P.O. Box 1275 / Springfield MO, 65801

Ph: 417-862-2673 / Fax: 417-862-5434

Email: usasales@indiv.com



indivusa.com